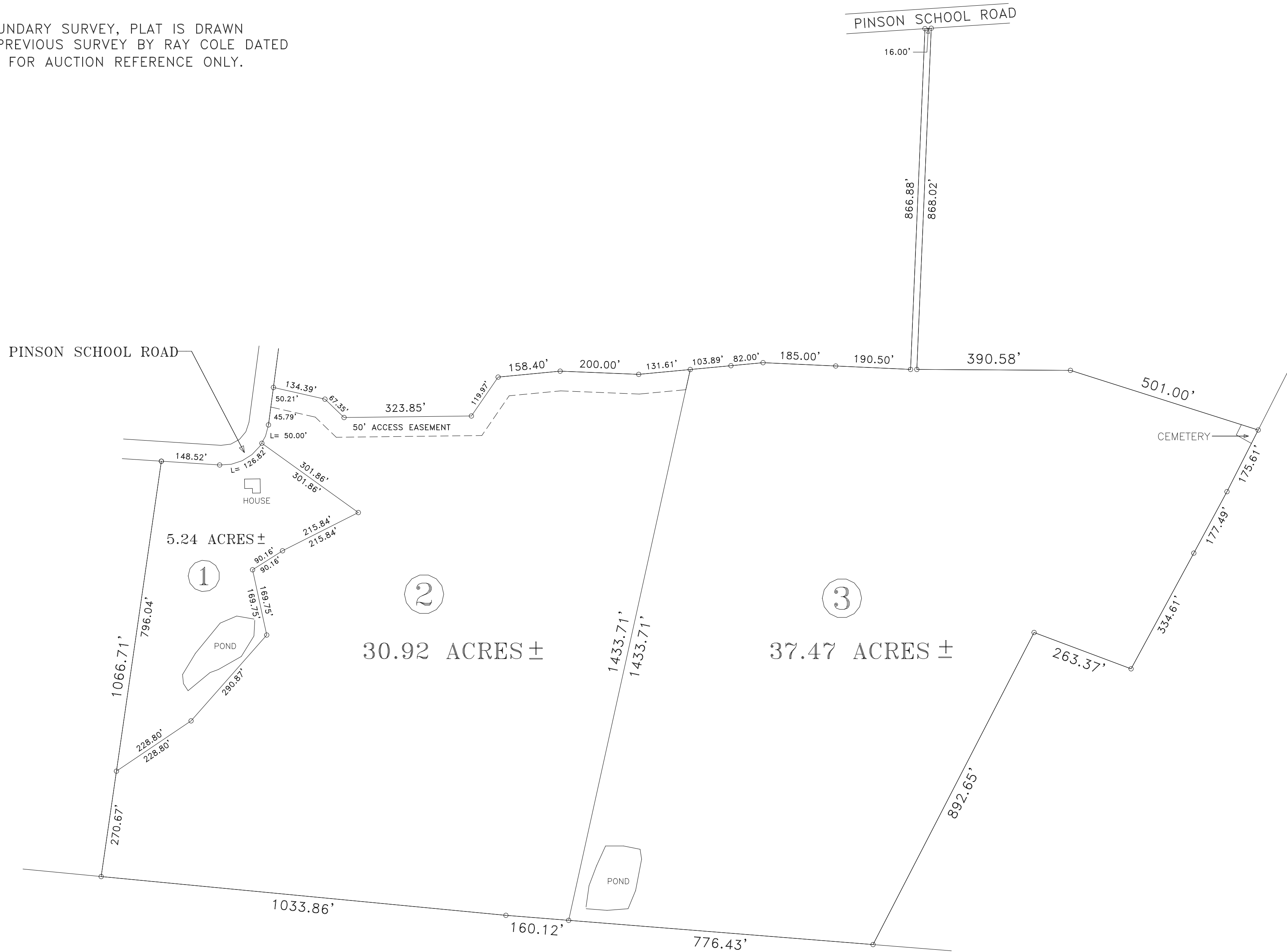
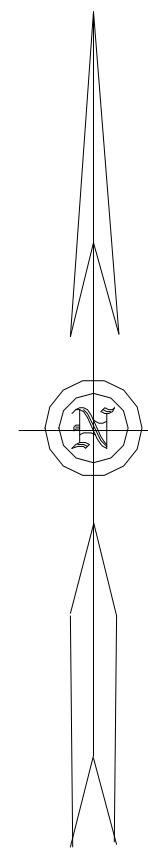
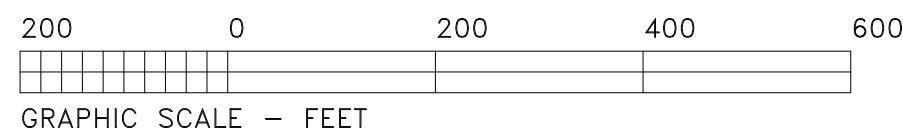


NOTE:
 THIS IS NOT A BOUNDARY SURVEY, PLAT IS DRAWN
 ACCORDING TO A PREVIOUS SURVEY BY RAY COLE DATED
 08/21/14, AND IS FOR AUCTION REFERENCE ONLY.



ANTHONY T. BOLLINGER, R.L.S.
 119 FISHER DRIVE
 GREENBRIER, TENNESSEE 37073
 615/218-0169



AUCTION PLAT OF			
LEE ANN FISHER & LILLIAN FISHER NEWSON PROPERTY			
SCALE 1" = 200'	DRAWN BY T.E.W.	APPROVED T.E.W.	DATE 04/06/22
10TH CIVIL DISTRICT			
ROBERTSON COUNTY TENNESSEE			DRAWING NO. SLAP